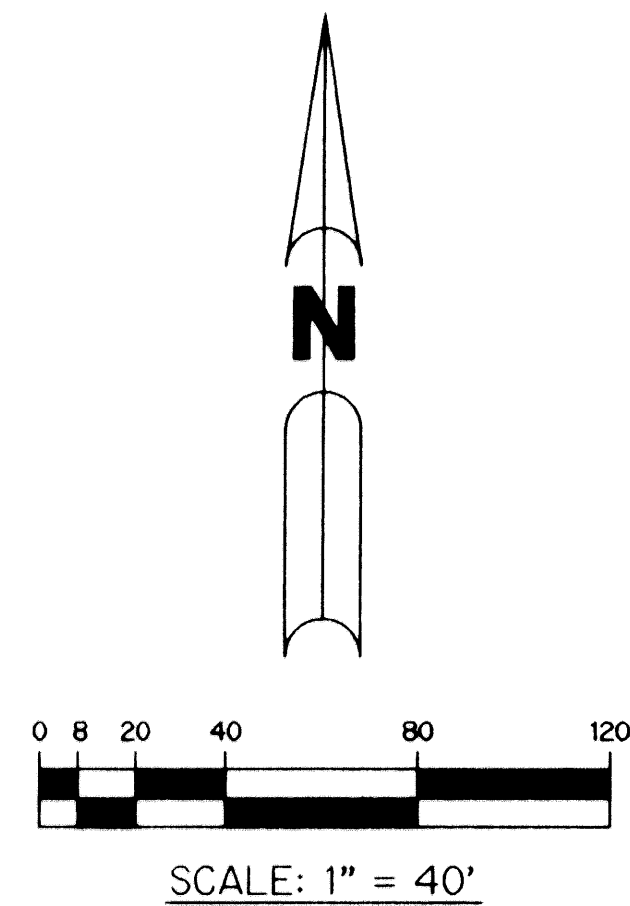


MIZNER FALLS

BEING A REPLAT OF TRACTS 1 THROUGH 4, BLOCK 55, LESS THE NORTH 75 FEET THEREOF, TRACTS 26 THROUGH 32 AND THE SOUTH 220 FEET OF TRACT 5, BLOCK 55, PALM BEACH FARMS COMPANY PLAT NO. 3 ACCORDING TO THE PLAT THEREOF RECORDED IN PLAT BOOK 2, PAGES 45 THROUGH 54 OF THE PUBLIC RECORDS OF PALM BEACH COUNTY, FLORIDA. SECTION 28, TOWNSHIP 45 SOUTH, RANGE 42 EAST, PALM BEACH COUNTY, FLORIDA.

SHEET 4 OF 8 AUGUST, 2000



TRACT 25 --
BLOCK 55
P.B.F.

MATCHLINE "A"

S17°40'39"W (GRID)
1369.12' (GRID)

UNITED STATES COAST & GEODETIC
SURVEY BRASS DISK IN CONCRETE "HAGEN"
N 795709.2596
E 929474.1033

N02°36'43"W (GRID)
2765.83' (GRID)

N 797013.7260
E 929890.8489

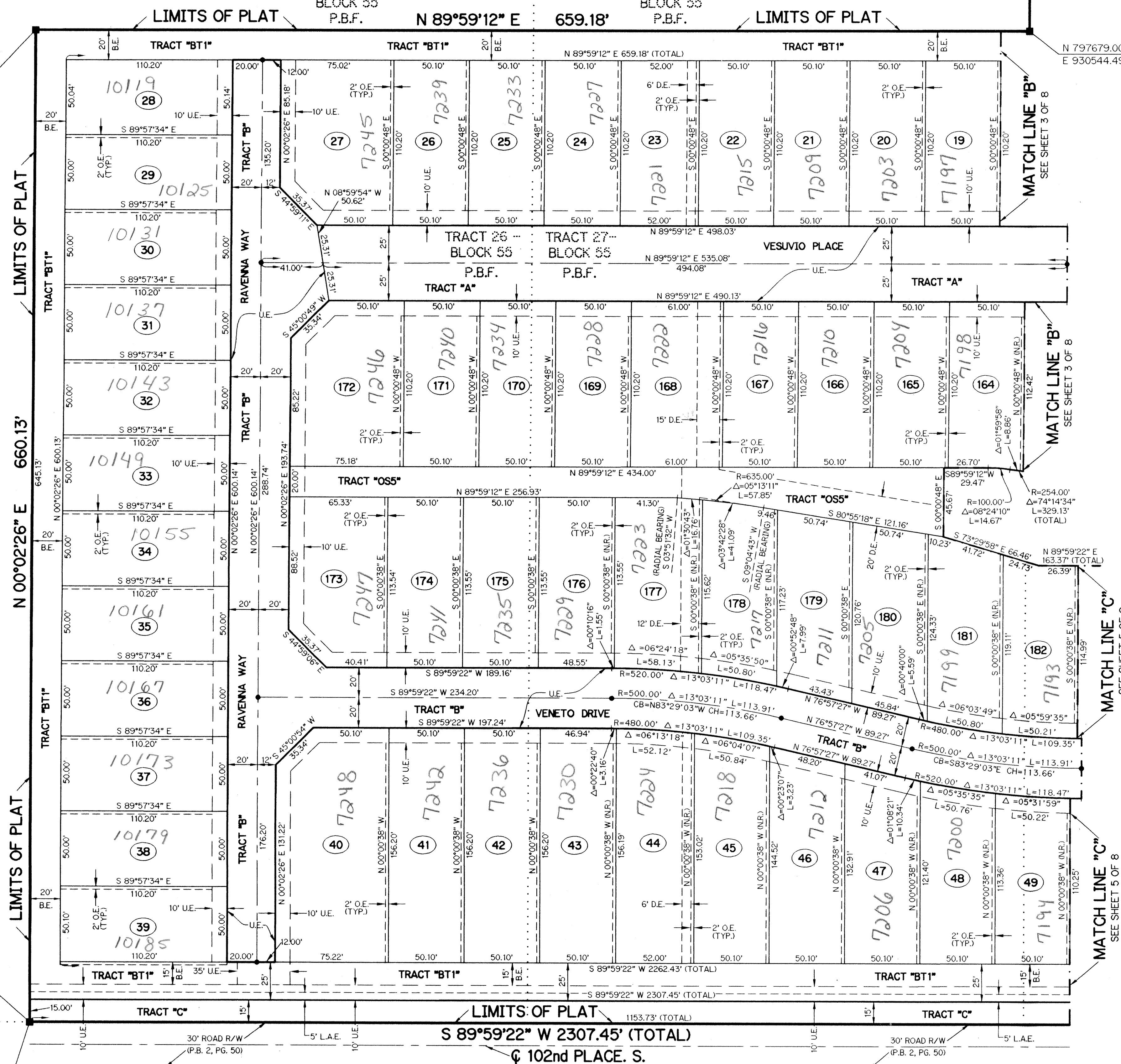
PALM BEACH COUNTY BRASS
DISK IN CONCRETE "RAN"
N 792946.3012
E 929600.1474

TRACT 40 -- BLOCK 55
P.B.F.

TRACT 39 -- BLOCK 55
P.B.F.

TRACT 38 -- BLOCK 55
P.B.F.

TRACT 37 --
BLOCK 55
P.B.F.



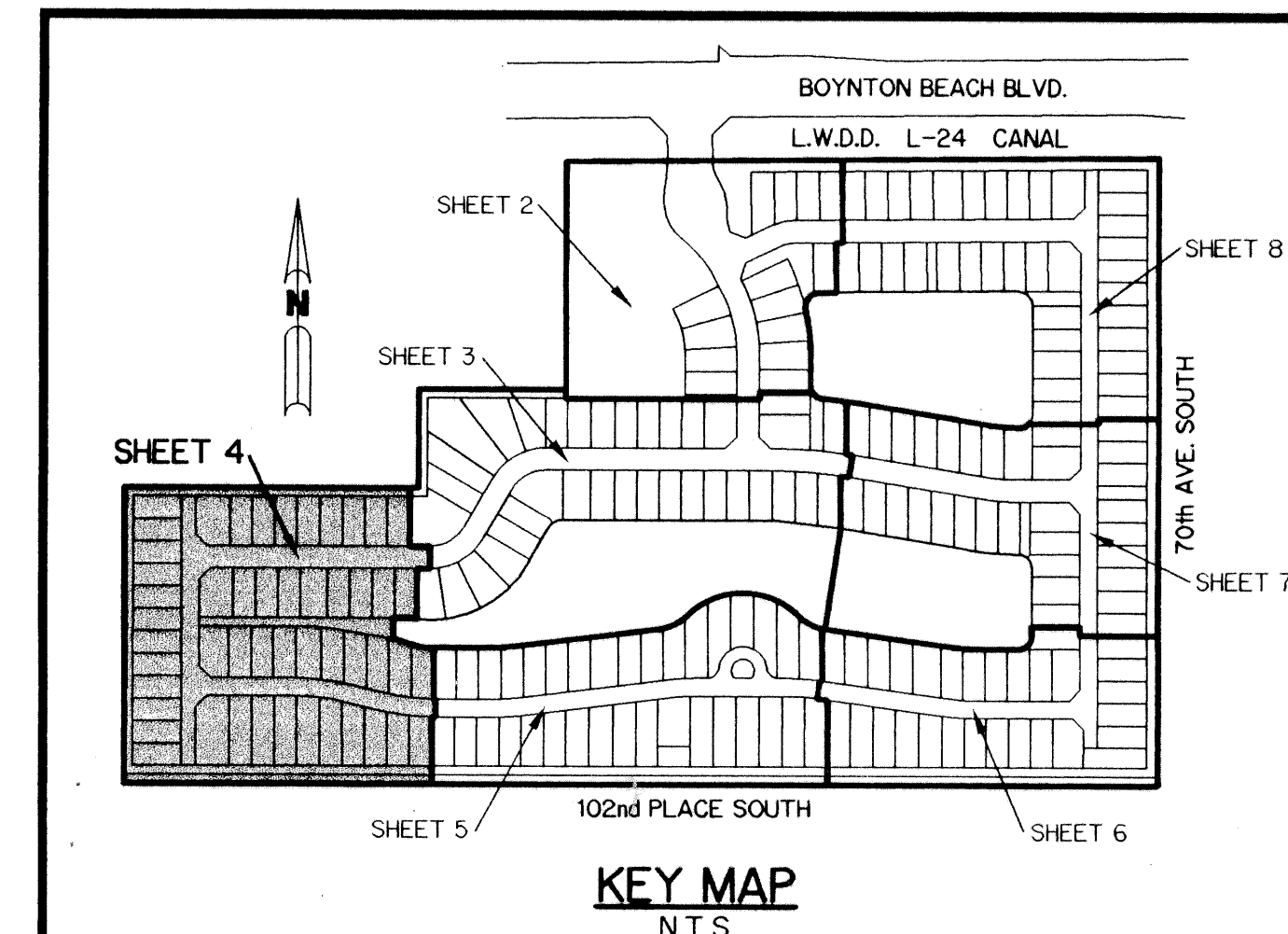
NOTE:

COORDINATES SHOWN ARE GRID COORDINATES
DATUM = NAD 83 (1998 ADJUSTMENT)
ZONE = FLORIDA EAST ZONE
LINEAR UNIT = U.S. SURVEY FEET
COORDINATE SYSTEM 1983 STATE PLANE
TRANSVERSE MERCATOR PROJECTION
ALL DISTANCES ARE GROUND
SCALE FACTOR = 1.0000277
PLAT BEARING = S89°59'22"W
GRID BEARING = S89°33'22"W
BEARING ROTATION (PLAT TO GRID)
00°26'00" COUNTER CLOCKWISE

LEGEND:

- - SET PERMANENT REFERENCE MONUMENT, LB-6674
- - PERMANENT CONTROL POINT, PSM #4190
- Δ - DELTA ANGLE
- B.E. - BUFFER EASEMENT
- C.L. - CENTERLINE
- C.B. - CHORD BEARING
- C.H. - CHORD LENGTH
- D.B. - DEED BOOK
- D.E. - DRAINAGE EASEMENT
- L. - ARC LENGTH
- L.A.E. - LIMITED ACCESS EASEMENT
- L.M.A.E. - LAKE MAINTENANCE ACCESS EASEMENT
- L.M.E. - LAKE MAINTENANCE EASEMENT
- L.W.D. - LAKE WORTH DRAINAGE DISTRICT
- N.R. - NOT RADIAL
- N.T.S. - NOT TO SCALE
- O.R.B. - OFFICIAL RECORD BOOK
- P.B. - PLAT BOOK
- P.B.F. - PALM BEACH FARMS COMPANY PLAT NO. 3 (P.B. 2, PGS. 45-54)
- PGS. - PAGES
- P.S.M. - PROFESSIONAL SURVEYOR AND MAPPER
- R. - RADIUS
- R/W - RIGHT-OF-WAY
- S.T. - SURVEY TIE
- U.E. - UTILITY EASEMENT
- N 814602.8657
E 785753.1680 - DENOTES STATE PLANE COORDINATES

THIS INSTRUMENT PREPARED BY
WILBUR F. DIVINE, P.S.M. 4190, STATE OF FLORIDA
LAWSON, NOBLE AND WEBB, INC., LB-6674
ENGINEERS PLANNERS SURVEYORS
420 COLUMBIA DRIVE, SUITE 110
WEST PALM BEACH, FLORIDA



KEY MAP
N.T.S.